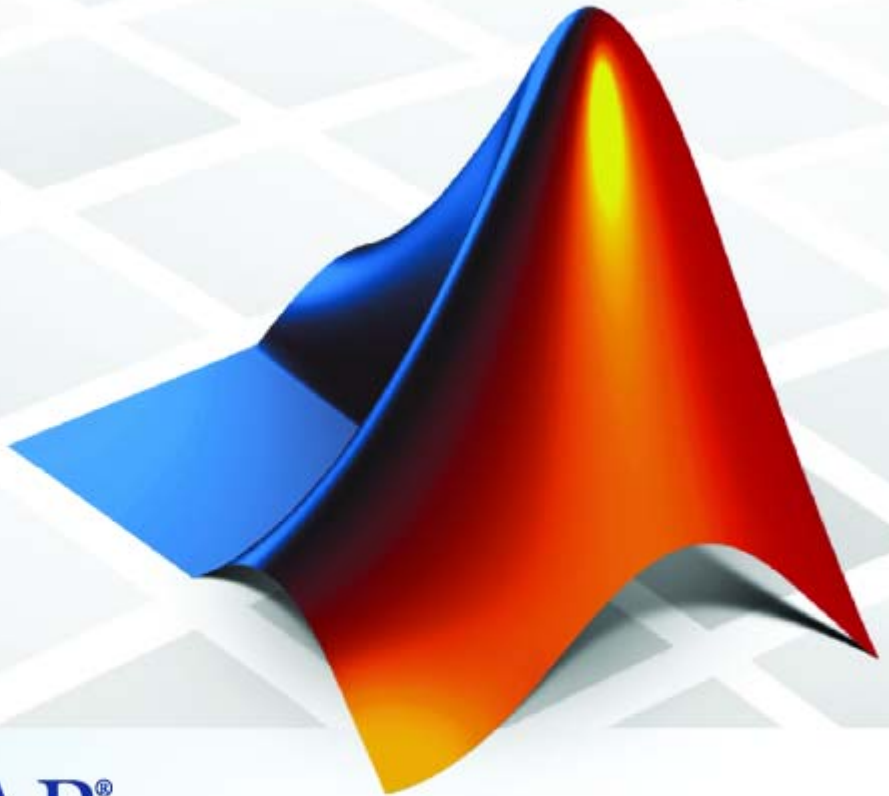


# MATLAB® & Simulink® Release 2007b

## Installation Guide for Mac OS X



MATLAB®

## How to Contact The MathWorks



[www.mathworks.com](http://www.mathworks.com)  
[comp.soft-sys.matlab](mailto:comp.soft-sys.matlab)  
[www.mathworks.com/contact\\_TS.html](http://www.mathworks.com/contact_TS.html)

Web  
Newsgroup  
Technical Support



[suggest@mathworks.com](mailto:suggest@mathworks.com)  
[bugs@mathworks.com](mailto:bugs@mathworks.com)  
[doc@mathworks.com](mailto:doc@mathworks.com)  
[service@mathworks.com](mailto:service@mathworks.com)  
[info@mathworks.com](mailto:info@mathworks.com)

Product enhancement suggestions  
Bug reports  
Documentation error reports  
Order status, license renewals, passcodes  
Sales, pricing, and general information



508-647-7000 (Phone)



508-647-7001 (Fax)



The MathWorks, Inc.  
3 Apple Hill Drive  
Natick, MA 01760-2098

For contact information about worldwide offices, see the MathWorks Web site.

*Installation Guide for Mac OS X*

© COPYRIGHT 2002–2007 by The MathWorks, Inc.

The software described in this document is furnished under a license agreement. The software may be used or copied only under the terms of the license agreement. No part of this manual may be photocopied or reproduced in any form without prior written consent from The MathWorks, Inc.

FEDERAL ACQUISITION: This provision applies to all acquisitions of the Program and Documentation by, for, or through the federal government of the United States. By accepting delivery of the Program or Documentation, the government hereby agrees that this software or documentation qualifies as commercial computer software or commercial computer software documentation as such terms are used or defined in FAR 12.212, DFARS Part 227.72, and DFARS 252.227-7014. Accordingly, the terms and conditions of this Agreement and only those rights specified in this Agreement, shall pertain to and govern the use, modification, reproduction, release, performance, display, and disclosure of the Program and Documentation by the federal government (or other entity acquiring for or through the federal government) and shall supersede any conflicting contractual terms or conditions. If this License fails to meet the government's needs or is inconsistent in any respect with federal procurement law, the government agrees to return the Program and Documentation, unused, to The MathWorks, Inc.

### Trademarks

MATLAB, Simulink, Stateflow, Handle Graphics, Real-Time Workshop, SimBiology, SimHydraulics, SimEvents, and xPC TargetBox are registered trademarks and The MathWorks, the L-shaped membrane logo, Embedded MATLAB, and PolySpace are trademarks of The MathWorks, Inc.

Other product or brand names are trademarks or registered trademarks of their respective holders.

### Patents

The MathWorks products are protected by one or more U.S. patents. Please see [www.mathworks.com/patents](http://www.mathworks.com/patents) for more information.

### Revision History

July 2002	First printing	New for MATLAB 6.5 (Release 13)
January 2003	Second printing	Revised for MATLAB 6.5.1 (Release 13SP1)
June 2004	Third printing	Revised for MATLAB 7.0 (Release 14) (Renamed from <i>Installing and Using MATLAB on Mac OS X</i> )
July 2004	Fourth printing	Revised for MATLAB 7.0 (Release 14)
October 2004	Fifth printing	Revised for MATLAB 7.0.1 (Release 14SP1)
March 2005	Sixth printing	Revised for MATLAB 7.0.4 (Release 14SP2)
September 2005	Seventh printing	Revised for MATLAB 7.1 (Release 14SP3)
March 2006	Eighth printing	Revised for MATLAB 7.2 (Release 2006a)
September 2006	Ninth printing	Revised for MATLAB 7.3 (Release 2006b)
March 2007	Online only	Revised for MATLAB 7.4 (Release 2007a)
September 2007	Online only	Revised for MATLAB 7.5 (Release 2007b)



## Standard Macintosh Installation Procedure

**1**

<b>Installing MATLAB</b> .....	<b>1-3</b>
Step 1: Before You Install .....	<b>1-3</b>
Step 2: Start the Installer .....	<b>1-4</b>
Step 3: Enter Identification Information .....	<b>1-4</b>
Step 4: Read the Important Information Display .....	<b>1-5</b>
Step 5: Review the Software License Agreement .....	<b>1-7</b>
Step 6: Specify Installation Folder .....	<b>1-7</b>
Step 7: Specify the Location of Your License File .....	<b>1-9</b>
Step 8: Select the Products to Install .....	<b>1-12</b>
Step 9: Install the License Manager (Optional) .....	<b>1-13</b>
Step 10: Complete the Installation .....	<b>1-15</b>
<b>After You Install</b> .....	<b>1-17</b>
Starting MATLAB .....	<b>1-17</b>
Putting MATLAB on the Path .....	<b>1-17</b>
Setting Up Network Named User Licensing .....	<b>1-18</b>
Setting Up Printing .....	<b>1-19</b>
<b>Installing Additional Products</b> .....	<b>1-21</b>
<b>Installing a Product Trial (Demo)</b> .....	<b>1-22</b>
<b>Installing MATLAB on a Client System</b> .....	<b>1-23</b>
<b>System Requirements</b> .....	<b>1-24</b>
Platforms .....	<b>1-24</b>
Graphics .....	<b>1-24</b>
Java Virtual Machine .....	<b>1-24</b>
Compilers (for MEX Files) .....	<b>1-25</b>
<b>Using the License Manager</b> .....	<b>1-26</b>
Product Licensing .....	<b>1-26</b>
Starting the License Manager .....	<b>1-29</b>

Disabling the License Manager .....	<b>1-31</b>
Reenabling the License Manager .....	<b>1-32</b>
Troubleshooting .....	<b>1-32</b>
<b>Removing (Uninstalling) a MATLAB Installation .....</b>	<b>1-35</b>
Removing MATLAB .....	<b>1-35</b>
Removing the License Manager .....	<b>1-35</b>
<b>Where to Go from Here .....</b>	<b>1-36</b>

## **Index**

---

# Standard Macintosh Installation Procedure

---

These instructions describe how to install MathWorks products on an Apple® Macintosh computer running OS, in either a stand-alone workstation or file server environment. MathWorks products run as X Windows applications requiring Apple® X11 for the Mac OS X window system. MATLAB® does not include special functionality associated with the Aqua user interface, but it looks like an Aqua application.

Installing MATLAB (p. 1-3)	Describes how to install the MathWorks products on a single system in either a stand-alone workstation or file server environment.
After You Install (p. 1-17)	Describes specialized installation tasks that some users may need
Installing Additional Products (p. 1-21)	Describes how to add additional products to an existing installation.
Installing a Product Trial (Demo) (p. 1-22)	Describes how to install a trial (demo) license.
Installing MATLAB on a Client System (p. 1-23)	Describes how to install MATLAB on a client system.
System Requirements (p. 1-24)	Describes the general system requirements for installing MATLAB.

Using the License Manager (p. 1-26)	Describes how to use the License Manager to manage your concurrent license.
Removing (Uninstalling) a MATLAB Installation (p. 1-35)	Describes how to remove the MATLAB family of products from your Macintosh
Where to Go from Here (p. 1-36)	Describes other installation tasks that you may need to perform



# Installing MATLAB

**In this section...**

- “Step 1: Before You Install” on page 1-3
- “Step 2: Start the Installer” on page 1-4
- “Step 3: Enter Identification Information” on page 1-4
- “Step 4: Read the Important Information Display” on page 1-5
- “Step 5: Review the Software License Agreement” on page 1-7
- “Step 6: Specify Installation Folder” on page 1-7
- “Step 7: Specify the Location of Your License File” on page 1-9
- “Step 8: Select the Products to Install” on page 1-12
- “Step 9: Install the License Manager (Optional)” on page 1-13
- “Step 10: Complete the Installation” on page 1-15

## Step 1: Before You Install

Before you run the MathWorks Installer:

- Make sure you have your License File. Every installation requires a License File. You need to copy and paste your licensing information into the License File dialog box during the installation process. For more information about License Files, see “Product Licensing” on page 1-26.
- Installing X11 for Mac OS X before installing MATLAB is recommended. You can either install X11 from Optional Installs on the Installer Disc that came with your Mac or download it from the Apple Web site. (For Mac OS 10.4, you must install X11 from the Tiger DVD; it is not available for download at the Apple Web site. Be sure to use the appropriate Tiger DVD for your platform.) For information about other requirements, see “System Requirements” on page 1-24.

---

**Note** Your base platform is UNIX and you should keep this in mind as you use MATLAB and other related products. See “Base Platform” on page 1-4 below for more information.

---

### **Base Platform**

Since OS X is based on UNIX®, this version of MATLAB is also based on UNIX. Consequently, as you use MATLAB and its related products, you need to keep in mind that your base platform is UNIX. For example, if you use the mex command, you will be using the UNIX version, so the options file is `mexopts.sh`. You can find more information about mex on UNIX in the MATLAB External Interfaces documentation, which is accessible from the Help browser.

The documentation for MathWorks products is not specific for individual platforms unless the product is available only on a particular platform. When you access a product’s documentation either in print or online through the Help browser, make sure you refer to the UNIX platform if there is different documentation for different platforms.

### **Step 2: Start the Installer**

The MathWorks products are distributed on a DVD or over the Internet. (Depending on your license option, you might also receive additional DVDs containing the Windows version of the software.) Place the DVD in the DVD drive. When the DVD icon appears on the desktop, double-click the icon to display the DVD’s contents. Double-click the `InstallForMacOSX` icon to begin the installation.

### **Step 3: Enter Identification Information**

Enter the user name and password of the administrator account in the Authenticate dialog box, and then click **OK**.



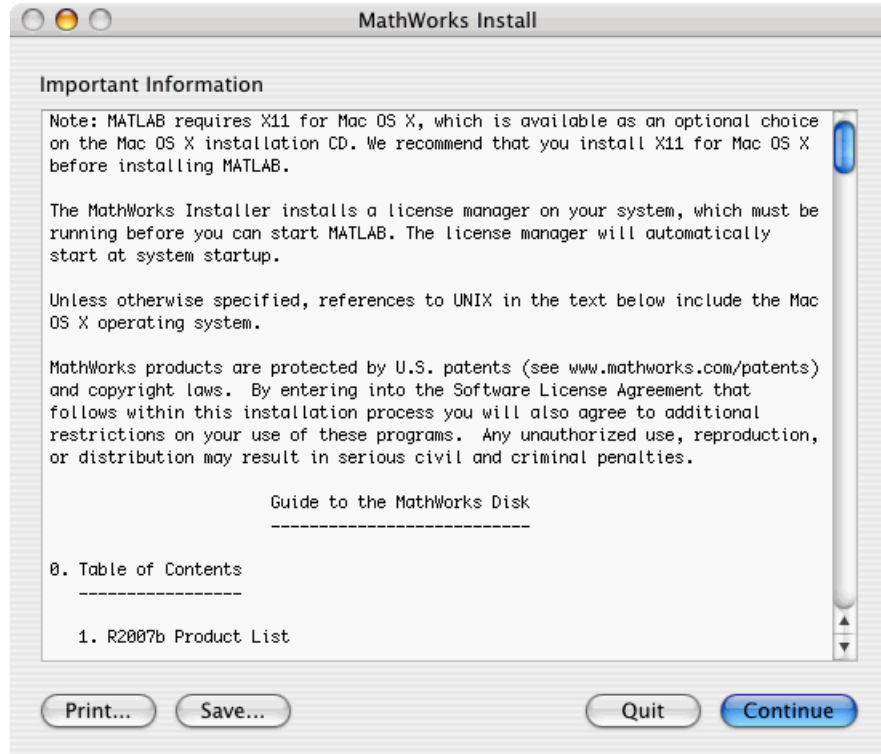
---

**Note** To install the MathWorks products, you must enter a user name and password for an administrator. The user account you set up when you configured your Macintosh is an administrator account. If you don't know the user name and password for an administrator, check with the person who administers your Macintosh.

---

#### **Step 4: Read the Important Information Display**

Review the information displayed in the Important Information dialog box and click **Continue** to proceed with the installation.

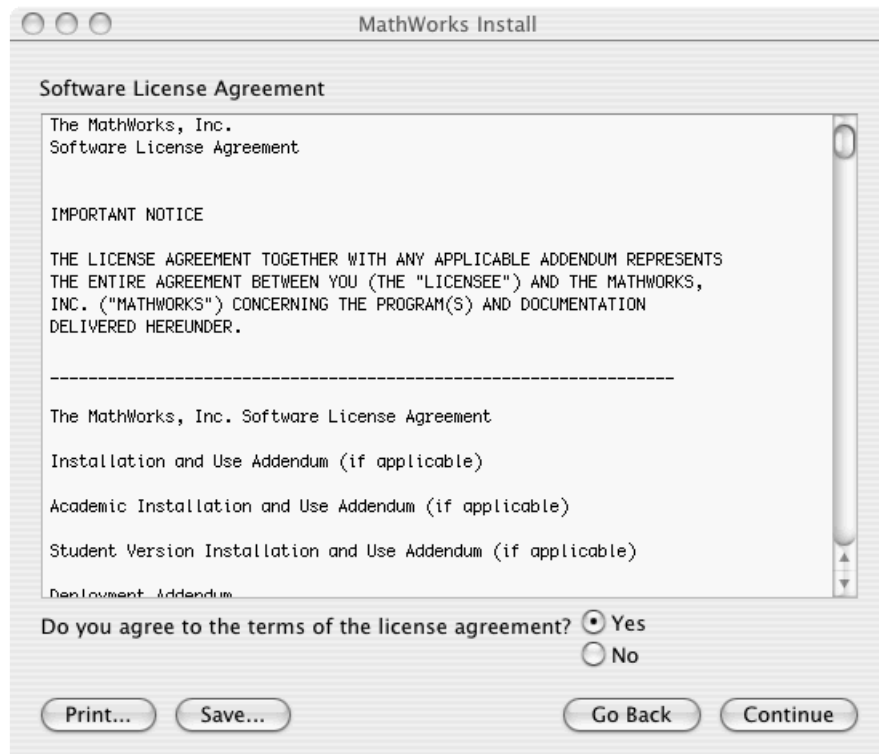


If you did not previously install X11 for Mac OS X, you will see the following message. You can continue with the installation by clicking **OK**, but note that you will not be able to run the MathWorks products until you install X11 for Mac OS X.



## Step 5: Review the Software License Agreement

Review the Software License Agreement and, if you agree to its terms, select **Yes** and click **Continue** to proceed with the installation.



## Step 6: Specify Installation Folder

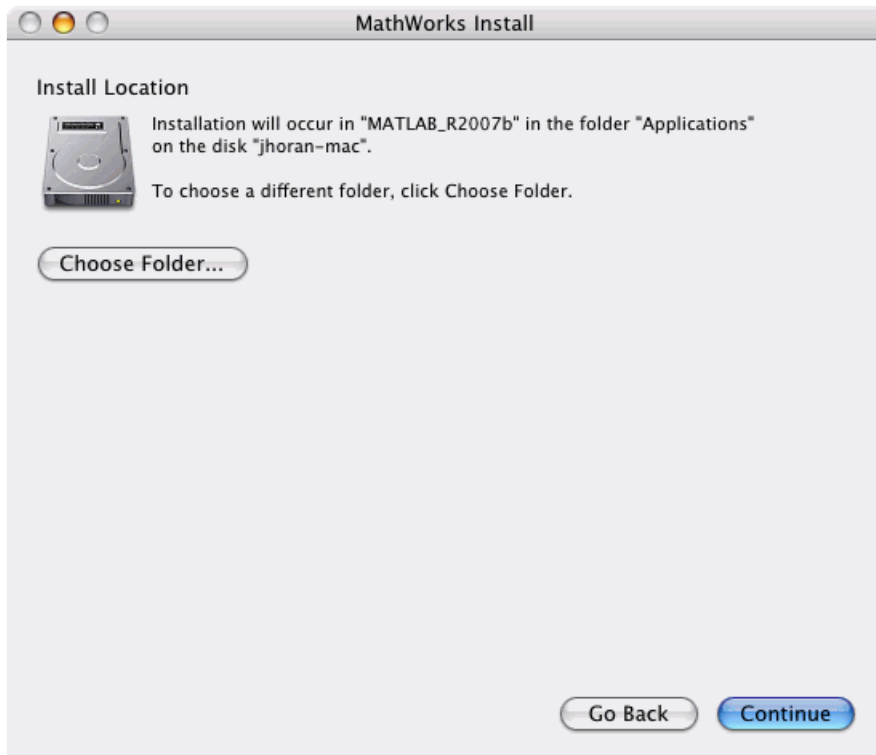
Specify the folder in which you want to install MATLAB. The default installation location is a folder in the Applications folder on your system disk. To accept the default, click **Continue**. To change the location, click **Choose Folder**, and then navigate to the desired location.

---

**Note** When upgrading an existing installation, always install your MathWorks products in a new installation folder. Do not install MathWorks products over any previous released version.

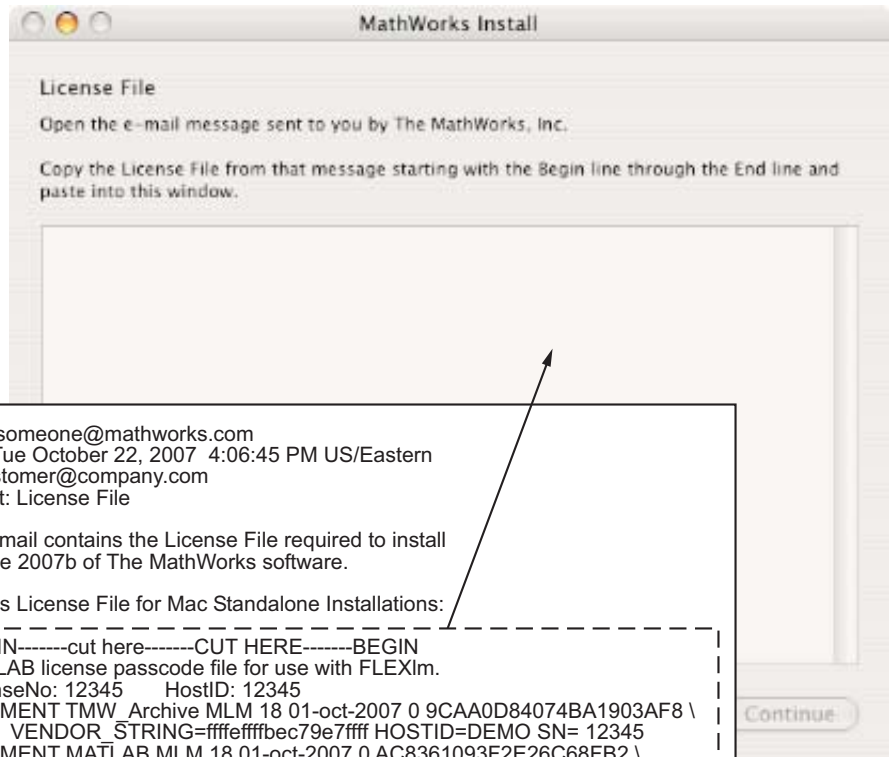
---

Your installation folder name cannot contain spaces, the @ character, the % character, or the \$ character. You cannot install into a folder named private, but you can have a folder named private on the path. To create the installation folder in this location on your system, you must have administrator privileges. For information on setting privileges, see Macintosh Help (**Command+?** from the desktop).



## Step 7: Specify the Location of Your License File

Copy the licensing information in your License File into the License File dialog. If you created a license.dat file, you can drag and drop it into the License File window. Click **Continue** to proceed with the installation.



```
From: someone@mathworks.com
Date: Tue October 22, 2007 4:06:45 PM US/Eastern
To: customer@company.com
Subject: License File

This e-mail contains the License File required to install
Release 2007b of The MathWorks software.

Use this License File for Mac Standalone Installations:
-----cut here-----CUT HERE-----BEGIN
# MATLAB license passcode file for use with FLEXlm.
# LicenseNo: 12345 HostID: 12345
| INCREMENT TMW_Archive MLM 18 01-oct-2007 0 9CAA0D84074BA1903AF8 \
| VENDOR_STRING=ffffeffbec79e7ffff HOSTID=DEMO SN= 12345
| INCREMENT MATLAB MLM 18 01-oct-2007 0 AC8361093F2E26C68FB2 \
| HOSTID=DEMO SN=12345
| INCREMENT SIMULINK MLM 18 01-oct-2007 0 FC1032B4E8CEFC89A41E \
| HOSTID=DEMO SN=12345
| INCREMENT Control_Toolbox MLM 18 01-oct-2007 0 \
| 4CD78462A651B87024B4 HOSTID=DEMO SN=12345
| INCREMENT Optimization_Toolbox MLM 18 01-oct-2007 0 \
| ECE2C1E0080FE54FC67A2 HOSTID=DEMO SN=12345
# END-----cut here-----CUT HERE-----END
-----
```

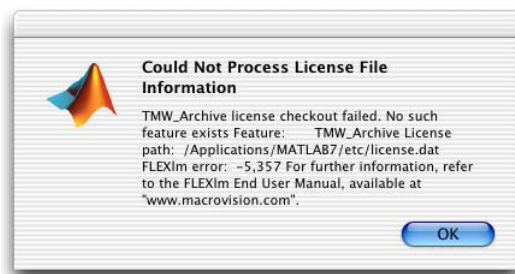
If you made no change to your License File, you will see the following message:





Clicking **Proceed Without Changes** lets you install products you did not install before or reinstall previously installed products. Clicking **Go Back** returns you to the License File window.

If you made a change to your License File and there is a problem with it, you will see a message similar to the following:



Click **OK** to return to the License File window and correct your License File. Once your License File is correct, you can proceed with the installation. Check that the expiration date, number of keys, and passcode fields in each INCREMENT line match your current license information available at the MathWorks Web site. Delete INCREMENT lines for products with expired licenses. (This avoids the warning messages that appear in your log file when you start MATLAB.) For more information, see “TMW\_Archive license checkout failed Error” on page 1-32.

---

**Note** If you are using a non-English version of the Mac OS, the INCREMENT line continuation character (\) might be interpreted incorrectly. To work around this issue, remove the continuation characters from the License File and join the parts of the INCREMENT lines together on one line.

---

## Step 8: Select the Products to Install

Select the products you want to install from the list of products available for installation, and then click **Continue**. For a complete list of products supported on the Macintosh, see Platform/Version Availability in the Products section of [www.mathworks.com](http://www.mathworks.com).



---

**Note** The Installer might display a message that states one or more of your licensed products are not available on this DVD, but are available at the MathWorks Web site, [www.mathworks.com](http://www.mathworks.com). To obtain products that have been released since this installation DVD was produced, visit the MathWorks Web site and download them.

---

## **Step 9: Install the License Manager (Optional)**

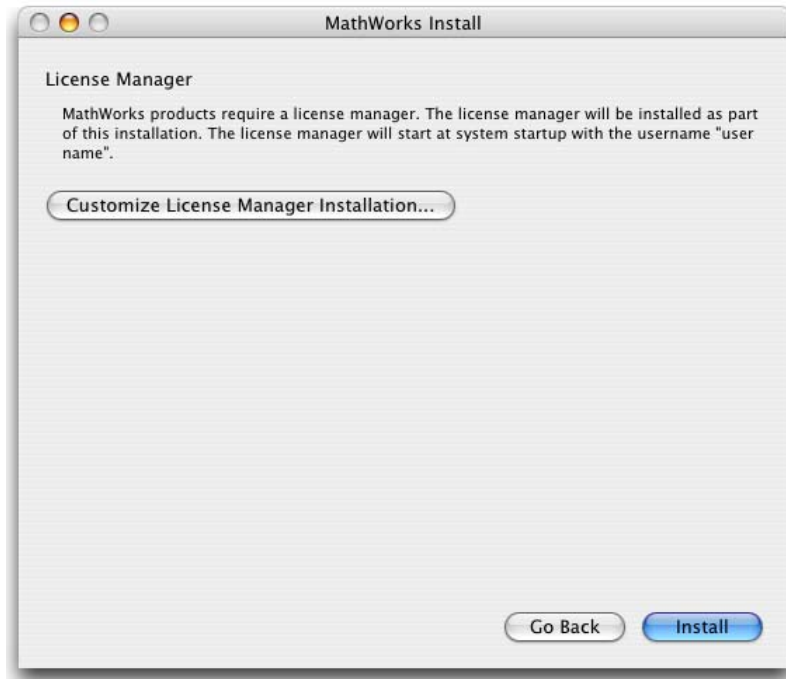
If the Installer determines that you need the license manager, the installer displays this dialog box. If you don't need the license manager, the installation process proceeds to Step 10.

To accept the default license manager installation, click **Install**. To change certain aspects of the license manager installation, such as whether it should start automatically at system startup, click **Customize License Manager Installation**. After you finish customizing the license manager, click **Install** to continue with the installation.

---

**Note** The installer does not display this dialog box if your installation is stand-alone or if everything you are installing is a demo. (This is not the same as adding a demo product to an existing, nondemo license.)

---

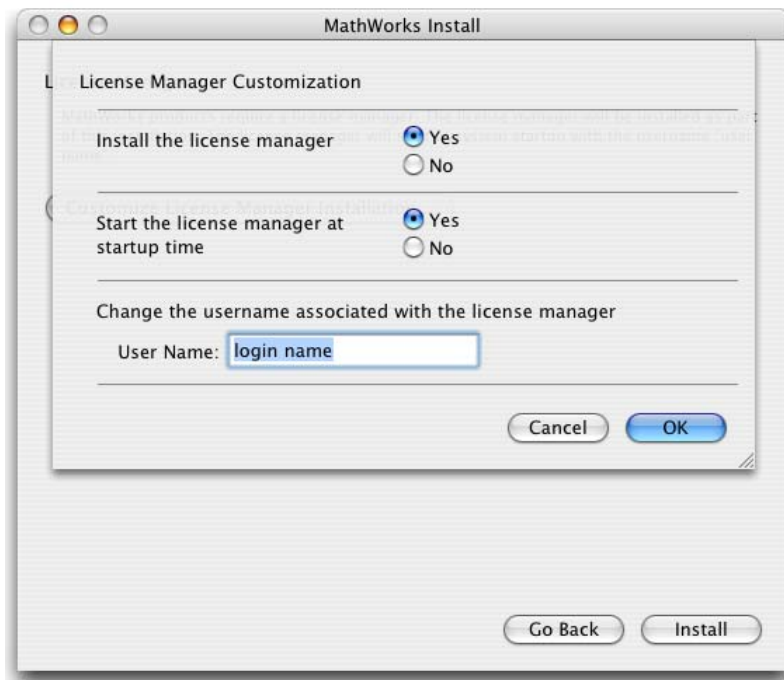


## Customizing the License Manager

If you choose to customize the license manager, you can

- Choose whether or not to install the license manager. You might not want to install it if:
  - Everything you are installing is a demo. (This is not the same as adding a demo product to an existing, nondemo license.)
  - This version of the license manager is already installed.
  - You have a concurrent license and you are configured as a client.
- Choose whether to start the license manager at startup time. The license manager must be running before you can start MATLAB and, by default, the installer configures the license manager to start automatically at system startup. To change this default, select **No**. You can start the license manager manually—see “Starting the License Manager” on page 1-29.

- Change the user name associated with the license manager.



After you customize the license manager, click **OK** to return to the License Manager window.

## Step 10: Complete the Installation

When the installation successfully completes, the installer displays the Installation Complete dialog box. This dialog box gives you options for accessing MATLAB. Select the options you want and click **Finish** to complete the installation. If you deselect the **Run MATLAB** option, you can always start MATLAB later—see “Starting MATLAB” on page 1-17.



After the installation is complete, you can drag the DVD icon to the trash and remove the DVD from the DVD drive.

## After You Install

This section contains additional information for users who need to customize some of their installation tasks.

- “Installing MATLAB on a Client System” on page 1-23
- “Putting MATLAB on the Path” on page 1-17
- “Setting Up Network Named User Licensing” on page 1-18
- “Using the License Manager” on page 1-26

To perform many of these tasks, it is helpful to have an understanding of UNIX.

### Starting MATLAB

To be able to start MATLAB:

- X11 for Mac OS X must be installed on your system
- License manager must be running (if your installation requires it)

To start MATLAB, locate the MATLAB icon on the desktop and double-click it. If there isn't a MATLAB icon on the desktop, navigate to the MATLAB installation folder and double-click on the MATLAB icon.

If you installed the license manager and accepted the defaults, the license manager automatically starts at system startup. If you choose to run the license manager manually, see “Starting the License Manager” on page 1-29.

### Putting MATLAB on the Path

If you want to start MATLAB by just typing `matlab` at the UNIX prompt, you must have MATLAB on your path. If you do not have MATLAB on the path, you will need to type the full MATLAB path each time to run the program from the prompt.

To put MATLAB on the path, you can add a symbolic link to MATLAB in a directory that is already on your path. For example, on a stand-alone, single-user machine, you can use `/usr/bin`.

You can add the symbolic link at the UNIX prompt by entering

```
ln -s matlabroot/bin/matlab
```

where *matlabroot* is the full path to your top-level MATLAB installation directory (as returned by the `matlabroot` command.) You must execute this command in a directory that is currently on the path, for example, `/usr/bin`. (To add `mex` and `mbuild` to the path, you must repeat the same process.)

For information on adding symbolic links on multiuser machines, see the Installation Guide for UNIX.

---

**Note** If you add symbolic links, you might need to rehash the UNIX path. Type `rehash` at the UNIX prompt.

---

## Setting Up Network Named User Licensing

Network Named User licensing is required if you need to control which users can access particular products.

If you have a Network Named User license, you might need to:

- Check the **FLEXNET** license options file after your installation is complete to make sure all licensed users are included.
- Check that the **DAEMON** line in your License File includes the options file specification `options=matlabroot/etc/MLM.opt`, where *matlabroot* is the full path to your top-level MATLAB installation directory.

---

**Note** Do not confuse your License File with your options file. The License File contains the encrypted passcodes for each product you are licensed to install and run. The options file is a text file that contains license manager options statements, such as `INCLUDE`, `EXCLUDE`, and `GROUP` lines.

---



## Options File

The installer creates the options file *matlabroot/etc/MLM.opt* as part of the installation process if your installation is a user-based license. The installer puts in the options file an `INCLUDE` line for each product you are licensed to install and run. By default, the installer puts the user name of the person who performed the installation in these `INCLUDE` lines. If you performed your own installation, the options file might not need editing. However, if you performed the installation for another user, or if you had root privileges when you performed the installation, you need to edit this options file.

For example, if your user name is `sysadmin`, the options file would look like this:

```
INCLUDE MATLAB USER sysadmin
INCLUDE Signal_Toolbox USER sysadmin
INCLUDE Optimization_Toolbox USER sysadmin
```

You must replace `sysadmin` in these `INCLUDE` statements with the user names of the licensed users. If multiple users are licensed for the same product, you must create a separate `INCLUDE` line for each user or use the **FLEXNET** `GROUP` syntax. (The number of users must not exceed the number of license keys available for that product.) This example shows both methods:

```
GROUP matlab_users tom judy mike jean brad
GROUP signal_users tom mike brad
INCLUDE MATLAB GROUP matlab_users
INCLUDE Signal_Toolbox GROUP signal_users
INCLUDE Optimization_Toolbox USER mike
INCLUDE Optimization_Toolbox USER jean
```

## Setting Up Printing

Printers must be added to the Printer Setup Utility in the `/Applications/Utilities` directory for MATLAB to recognize them. The MATLAB print command uses `lpr` like other UNIX systems. MATLAB uses the Macintosh default printer as set in the Printer Setup Utility if you do not use `-P<printer>`. For example, to print the current figure to printer `trinity`, you can use

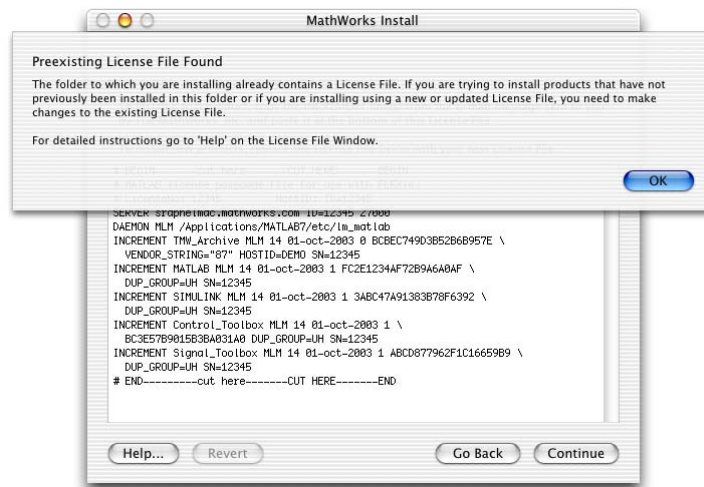
```
print -Ptrinity
```

To set up a printer, open the Printer Setup Utility in /Applications/Utilities. Click **Add Printer**. Refer to Macintosh Help (**Command+?**) for additional information.

## Installing Additional Products

To add a newly purchased product to an existing MATLAB installation:

- 1 Run the MathWorks Installer.
- 2 Because your existing installation already has a License File, the installer displays the License File in the License File dialog box and displays the Preexisting License File Found warning.



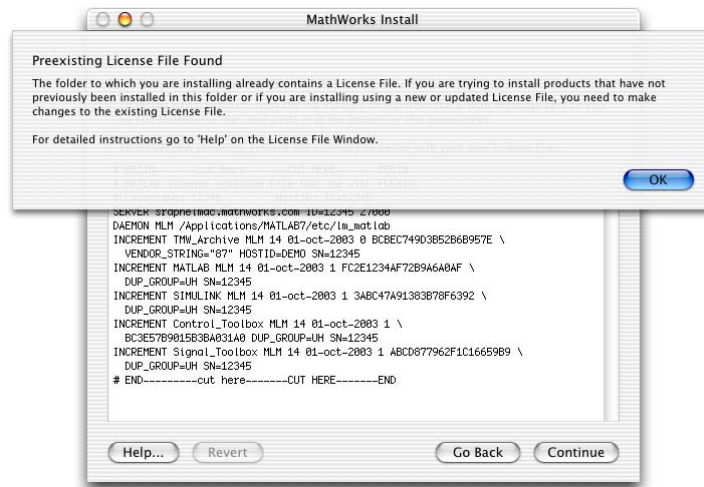
Click **OK** to dismiss the warning dialog box.

- 3 Replace the old License File with your new License File. The License File dialog contains your new products and all of your existing products.
- 4 Click **Continue** and proceed with the rest of the installation.

## Installing a Product Trial (Demo)

To add a product trial (demo) to an existing MATLAB installation:

- 1 Run the MathWorks Installer.
- 2 Because your existing installation already has a License File, the installer displays the License File in the License File dialog box, and displays the Preexisting License File Found warning.



Click **OK** to dismiss the Preexisting License File Found warning.

- 3 Copy the INCREMENT lines you received for the product trials and paste them at the end of the text in the License File window.
- 4 Click **Continue** and proceed with the rest of the installation process.

## Installing MATLAB on a Client System

If you need to set up a MATLAB network installation, you can do it in several ways. Typically, you install MATLAB and the license manager on a server and users access MATLAB over the network. You can also install MATLAB locally on users' systems. In this configuration, the local installations, (or clients), need to access the server only to check out a license key when MATLAB starts. For more information on setting up MATLAB on a network, see "Installing MATLAB on a Client System" in the Installation Guide for UNIX.

## System Requirements

In this section...
“Platforms” on page 1-24
“Graphics” on page 1-24
“Java Virtual Machine” on page 1-24
“Compilers (for MEX Files)” on page 1-25

**Note** For the most up-to-date information about system requirements, go to the MathWorks Web site ([www.mathworks.com](http://www.mathworks.com)) and click **Support**. On the Support page, click **System Requirements**.

### Platforms

#### Macintosh

	Operating Environment	Processor	Disk Space	RAM
32-bit MathWorks Products	Mac OS X (10.4.8. and above)	PowerPC (G4 and above) Intel	510 MB (MATLAB only)	512 MB (1024 MB recommended)

### Graphics

X11 (X server) for Mac OS X

### Java Virtual Machine

Java Runtime Environment 1.5 Release 4.

## **Compilers (for MEX Files)**

For the most up-to-date information about compilers, go to the MathWorks Web site ([www.mathworks.com](http://www.mathworks.com)) and click **Support**.

## Using the License Manager

In this section...
“Product Licensing” on page 1-26
“Starting the License Manager” on page 1-29
“Disabling the License Manager” on page 1-31
“Reenabling the License Manager” on page 1-32
“Troubleshooting” on page 1-32

---

**Note** If you have a concurrent license, you can use the license manager’s time-out option to free idle license keys at your site. With license time-outs, the license manager automatically frees license keys that sit idle for a specified period of time, returning them to the pool of available license keys. For more information on using time-outs, see the *Installation Guide for UNIX*.

---

### Product Licensing

- “License File Overview” on page 1-26
- “Creating a License File” on page 1-27
- “Obtaining Your License File from The MathWorks” on page 1-28

### License File Overview

The MathWorks uses a License file to control access to our products. A License File contains a set of license passcodes. These license passcodes:

- Identify the products you are licensed to install and use.
- Specify the number of users who may use each product (also known as the *keys* associated with a license).
- Specify the expiration date of each license.

The following is a sample License File. Lines that begin with a pound sign (#) are comments. Make sure to include these comment lines when you copy



the license information into the License File dialog box during installation. The INCREMENT TMW\_Archive line specifies the products you are licensed to install. The other INCREMENT lines identify products you are licensed to run.

```
# BEGIN-----cut here-----CUT HERE-----BEGIN
# MATLAB license passcode file for use with FLEXlm.
# LicenseNo: 12345          HostID: 12345
INCREMENT TMW_Archive MLM 18 01-mar-2007 0 9CAA0D84074BA1903AF8 \
  VENDOR_STRING=ffffeffffbec79e7ffff HOSTID=DEMO SN= 12345
INCREMENT MATLAB MLM 18 01-mar-2007 0 AC8361093F2E26C68FB2 \
  HOSTID=DEMO SN=12345
INCREMENT SIMULINK MLM 18 01-mar-2007 0 FC1032B4E8CEFC89A41E \
  HOSTID=DEMO SN=12345
INCREMENT Control_Toolbox MLM 18 01-mar-2007 0 \
  4CD78462A651B87024B4 HOSTID=DEMO SN=12345
INCREMENT Optimization_Toolbox MLM 18 01-mar-2007 0 \
  ECE2C1E0080FE54FC67A2 HOSTID=DEMO SN=12345
# END-----cut here-----CUT HERE-----END
```

## Creating a License File

You can create a License File from the licensing information you retrieved from The MathWorks Web site by following the instructions below, or you can simply copy the licensing information into the License File dialog during the installation process.

To create the License File:

- 1** Open a text file using any text editor.
- 2** Select all your licensing information from the BEGIN line to the END line, inclusive. Make sure to select all the information contained in this section, including the comment lines.
- 3** Copy the license information and paste it into the open text file.

In general, do not edit the licensing information; you may invalidate a license. However, note the following:

- Make sure you remove any line breaks between the start and end of an INCREMENT line. If an INCREMENT line must continue onto more than one line, use the line continuation character \ (backslash), as in the following:

```
INCREMENT Control_Toolbox MLM 18 01-mar-2007 0\  
4CD78462A651B87024B4 HOSTID=DEMO SN=12345
```

- Make sure that there is a space between each field in the INCREMENT line. Do not use tabs to separate these fields.
  - License Files are case sensitive.
- 4 Save the text file, naming it `license.dat`, on your desktop or note its location so you can locate it during the installation process.

### Obtaining Your License File from The MathWorks

If you do not have your License File, you can obtain it by contacting The MathWorks via

- The MathWorks Web site ([www.mathworks.com/support/managelicenses](http://www.mathworks.com/support/managelicenses))
- E-mail at [service@mathworks.com](mailto:service@mathworks.com)
- Telephone at 508-647-7000, ask for Customer Service. To find the phone number of one of our international offices, go to the MathWorks Web site at [www.mathworks.com](http://www.mathworks.com) and click **Contact Us** at the top of the page.

Have ready, or include in your e-mail or fax, the following items:

- Your e-mail address
- Your License Number

You may also need the host ID for the machine on which you plan to run the licensing software used by the MathWorks products. Two ways to determine your host ID are:

- Open the Apple System Profiler application in `/Applications/Utilities`. Look in the **Network overview** of the **System Profile** to find your Macintosh Ethernet address, for example, `8.0.2b.e6.87.59`.

- If you are familiar with the Terminal application, you can also use the command:

```
netstat -I en0
```

assuming en0 is the Ethernet interface. Use the period-separated address such as 8.0.2b.e6.87.59. Note that to use this address as a host ID, you must remove all periods (.) and prefix any single-digit parts of the address with a zero (0). For example, the host ID for the address above would be 08002be68759. For more information, see “Determining Your Host ID” in the Installation Guide for UNIX.

---

**Note** Be sure to provide the host ID of the system on which you plan to run the licensing software, not the host ID of a client workstation.

---

## Starting the License Manager

In installations where the license manager is needed, the installation process automatically configures the license manager to start when you start your machine. If you accepted the defaults when you installed your MathWorks products, the installer configures the license manager to start automatically when you start your machine. If you chose not to configure the license manager during installation, the following sections describe how to configure the license manager to start at startup time or to start the license manager manually.

- “Copying the License Manager Startup Script into the Macintosh StartUpItems Folder” on page 1-29
- “Configuring the License Manager by Rerunning the Installer” on page 1-30
- “Starting the License Manager Manually” on page 1-31

## Copying the License Manager Startup Script into the Macintosh StartUpItems Folder

The following procedure explains how to set this up manually. You must be an administrator to install this startup folder:

- 1 Navigate to the top-level /Library folder.

- 2** Create a folder within `/Library` called `StartupItems`, if it does not already exist.
- 3** Copy the `matlabroot/etc/MATLABMgr` folder into the `StartupItems` folder.
- 4** Run the Terminal application (`/Applications/Utilities`) and in the Terminal window enter the commands:

```
cd /Library/StartupItems/MATLABMgr
./config_lm.sh
```

- 5** The `config_lm.sh` script asks you to enter the directory where your MathWorks products are installed, that is, the MATLAB root directory (`matlabroot`). For example, if your MATLAB products are installed in `/Applications/MATLAB74`, you would enter:

```
/Applications/MATLAB74
```

- 6** The script then asks for your user name. The script uses the user name returned by the `whoami` command as the default. Accept the default or enter a different user name.
- 7** When the script finishes, restart your machine.

During startup, the message `Starting MATLAB License Manager` should appear on the screen. If you have difficulty starting the license manager, see “Troubleshooting” on page 1-32 for more information.

### **Configuring the License Manager by Rerunning the Installer**

Another way to configure the license manager to start at startup time is to rerun the installer, not installing any products, but just using it to configure the license manager. Follow this procedure:

- 1** Double-click the `InstallForMacOSX` icon to begin the installation.
- 2** Proceed as usual through the installation steps.
- 3** When you get to the `Select Products for Installation` window, click **Deselect All**, and then click **Continue**.

- 4** On the License Manager window, click **Customize License Manager Installation**, and then click the **Yes** button next to **Start the License Manager at start up time**.
- 5** Continue through the remainder of the installation as described earlier.

## Starting the License Manager Manually

To start the license manager manually, follow this procedure:

To start the license manager manually,

- 1** Start the Terminal application (/Applications/Utilities).
- 2** At the command prompt in the Terminal window, navigate to your MATLAB installation folder:

```
cd /Applications/MATLAB74/etc
```

- 3** To start the license manager, execute the following command:

```
./lmstart
```

---

**Note** Any time you make changes to the `license.dat` file, you must restart the license manager daemons by running `lmstart`. The `lmstart` script stops any currently running daemons and starts new ones.

---

## Disabling the License Manager

If you do not want the license manager to start automatically at startup, you can disable it. To disable the `MATLABLmgr` script:

- 1** From the **Finder**, select **Go To Folder** from the **Go** menu.
- 2** In the **Go to the folder** field in the Go To Folder dialog box, enter

```
/Library/StartupItems/MATLABLmgr
```

and click **Go**. A window titled `MATLABL mgr` appears, containing several files.

- 3 Rename the file `StartupParameters.plist` to `StartupParameters_disabled.plist`.

## Reenabling the License Manager

You can reenabling the license manager to start at startup by following steps 1 to 3 above and renaming `StartupParameters_disabled.plist` back to `StartupParameters.plist`.

## Troubleshooting

The following sections describe some common trouble spots when working with the license manager. For more help, visit the Support page at the MathWorks Web site.

- “TMW\_Archive license checkout failed Error” on page 1-32
- “License Manager Errors -39 and -84” on page 1-33
- “License Manager Errors -95 and -96” on page 1-33

### TMW\_Archive license checkout failed Error

This error message indicates an error in the INCREMENT lines of your `license.dat` file. This might be the result of having extra tabs or extra carriage returns within the lines.

Here is an example of an incorrectly formatted file. A carriage return, just before the INCREMENT MATLAB line, is missing:

```
INCREMENT TMW_Archive MLM 18 01-mar-2007 0 2DC2FE7151161BBEB5B \  
  VENDOR_STRING=ff75e02aaee9ac1ccff HOSTID=DEMO SN=12345 INCREMENT  
MATLAB MLM 18 01-mar-2007 1 \  
  DEE27FF7E2E6AFBBE2A USER_BASED DUP_GROUP=U SN=12345
```

To resolve this error, add a carriage return just before INCREMENT MATLAB:

```
INCREMENT TMW_Archive MLM 18 01-mar-2007 0 2DC2FE7151161BBEB5B \  
  VENDOR_STRING=ff75e02aaee9ac1ccff HOSTID=DEMO SN=12345  
INCREMENT MATLAB MLM 18 01-mar-2007 1 \  
  DEE27FF7E2E6AFBBE2A USER_BASED DUP_GROUP=U SN=12345
```

## License Manager Errors -39 and -84

You may receive these errors if you are not correctly listed in the options file (MLM.opt), or if the license manager is unable to read the options file.

To resolve this error, make sure the path to the options file (MLM.opt) is listed correctly in the DAEMON line of your `license.dat` file located in the `matlabroot/etc` directory, where `matlabroot` is the full path to your top-level MATLAB installation directory.

Your DAEMON line should look like:

```
DAEMON MLM /Applications/MATLAB74/etc/lm_matlab\  
options=/Applications/MATLAB74/etc/MLM.opt
```

If the path is correct, then make sure your user name is listed properly in the options file. For example, if you want to use MATLAB and Signal Processing Toolbox, then the following lines must be in your options file:

```
INCLUDE MATLAB_USER user name  
INCLUDE Signal_Toolbox USER username
```

where `username` is your actual user name. To determine your user name, run the following command in a Terminal window:

```
whoami
```

## License Manager Errors -95 and -96

You may receive these error messages if your machine is unable to resolve the host name.

If you are using a stand-alone named user installation, make sure your computer is connected to the network and perform the following:

- 1 Open a Terminal window (Applications -> Utilities -> Terminal).
- 2 Type `hostname`.
- 3 Type `ping network_hostname`, where `network_hostname` is the output of running the `hostname` command.

- 4** Type `tracert network_hostname`, where `network_hostname` is the output of running the `hostname` command.

If through these tasks you are unable to resolve the host name, then you must contact your Network Administrator to help resolve any networking issues on your machine.

If you are using a Network license, you must check to see if the host name of the server machine can be resolved:

- 1** Open a Finder window.
- 2** Navigate to the `matlabroot/etc` directory, where `matlabroot` is the full path to your top-level MATLAB installation directory.
- 3** Open the `license.dat` file with TextEdit. The host name listed in the `SERVER` line is the server name.
- 4** Open a Terminal window (Applications -> Utilities -> Terminal).
- 5** Type `ping server_hostname`, where `server_hostname` is the host name of the server machine listed in the `SERVER` line of the `license.dat` file.
- 6** Type `tracert server_hostname`, where `server_hostname` is the host name of the server machine listed in the `SERVER` line of the `license.dat` file.

If through these tasks you are unable to resolve the hostname, then you must contact your Network Administrator to help resolve any networking issues on your machine.



## Removing (Uninstalling) a MATLAB Installation

### In this section...

“Removing MATLAB” on page 1-35

“Removing the License Manager” on page 1-35

### Removing MATLAB

To remove a MATLAB installation, you need to remove MATLAB and its related products. Depending on where these components are located, you might need administrator privileges to remove them. Make sure to exit MATLAB and stop the license manager before removing a MATLAB installation. You can use the `lmdown` command to stop the license manager. See the *Installation Guide for UNIX* for information about the `lmdown` command.

Locate the folder that contains MATLAB and its related products. If you followed the installation process, the folder is named MATLAB75. Drag the MATLAB75 folder to the trash, and then select **Empty Trash** from the **Finder** menu.

### Removing the License Manager

- 1 From the **Finder**, select **Go To Folder** from the **Go** menu.
- 2 In the **Go to the folder** field in the Go To Folder dialog box, enter  
`/Library/StartupItems/MATLABMgr`  
and click **Go**. A window titled MATLABMgr appears, containing several files.
- 3 Drag the MATLABMgr folder to the trash, and then select **Empty Trash** from the **Finder** menu.

## **Where to Go from Here**

This guide provided the basics for getting your MathWorks products installed and running on individual Macintosh systems. Other installation tasks include:

- Specifying print options
- Specifying documentation viewing options
- Reducing startup time with toolbox path caching
- Specifying MATLAB startup options
- Configuring MATLAB products
- Installing additional products
- Managing your licenses

All of these are fully described in the Installation Guide for UNIX documentation.

## A

- adding
  - MATLAB to path 1-17
  - printer 1-19

## C

- client system
  - installing on 1-23
- contacting The MathWorks 1-28

## E

- errors
  - license manager error -39 1-33
  - license manager error -84 1-33
  - license manager error -95 1-33
  - license manager error -96 1-33

## F

- files
  - license 1-26

## H

- host ID
  - finding host ID on Macintosh 1-28

## I

- installation
  - additional tasks 1-36
  - basic 1-3
- installing
  - MATLAB 1-3

## K

- keys
  - definition 1-26

## L

- License Files
  - creating 1-26
- license keys 1-26
- license manager
  - automating startup 1-29
  - disabling 1-31
  - error -39 1-33
  - error -84 1-33
  - error -95 1-33
  - error -96 1-33
  - installing on server 1-23
  - reenabling 1-32
  - startup problem 1-31
  - time-out 1-26
  - troubleshooting 1-32
- License Number 1-28
- license passcodes 1-26
- licenses
  - Network Named User 1-18

## M

- MATLAB
  - adding to path 1-17
  - installing 1-3
  - uninstalling 1-35
- MATLABMgr script 1-29

## N

- network installation
  - installing on 1-23
- Network Named User licensing
  - setting up 1-18
- Number
  - License 1-28

**O**

OS X 1-1

**P**

passcodes 1-26

path

    adding MATLAB 1-17

printer

    setting up 1-19

Printer Setup Utility 1-19

printing 1-19

**R**

rehash 1-18

removing MATLAB 1-35

root status 1-17

**S**

setting up

    Network Named User licensing 1-18

    printer 1-19

status

    root 1-17

symbolic links 1-17

    rehash 1-18

system requirements 1-24

**T**

time-out 1-26

TMW\_Archive line

    in License Files 1-27

troubleshooting

    license manager 1-32

**U**

uninstalling MATLAB 1-35

**W**

Web site, The MathWorks

    obtaining License Files 1-28

**X**

X11 for Mac OS X 1-1